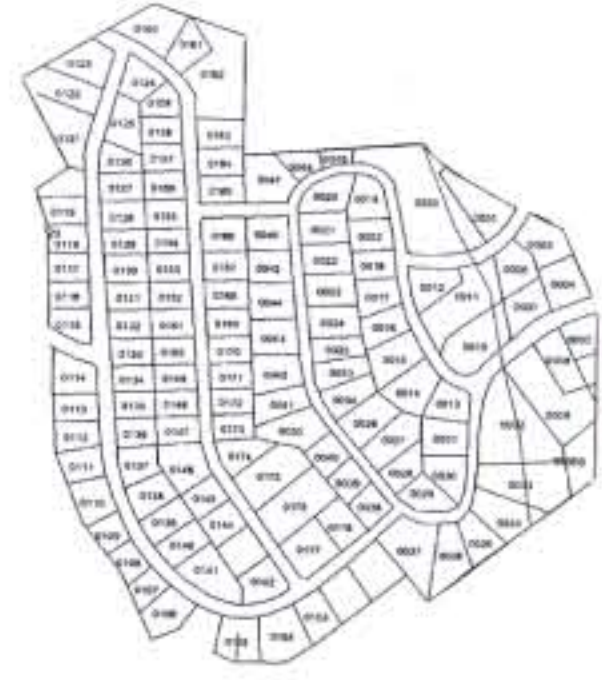
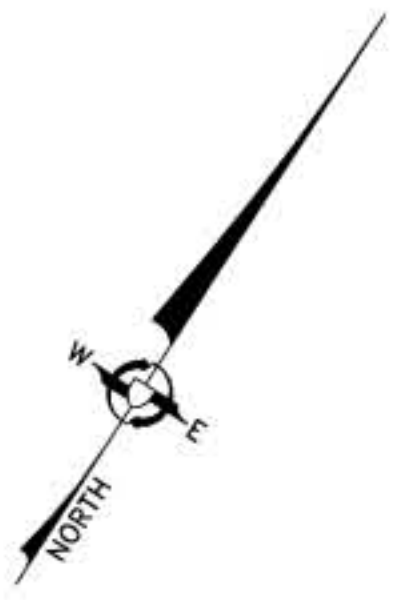


# Modern Landfill - York County, Pennsylvania

Average Daily Volume = 4,667 Tons/Day

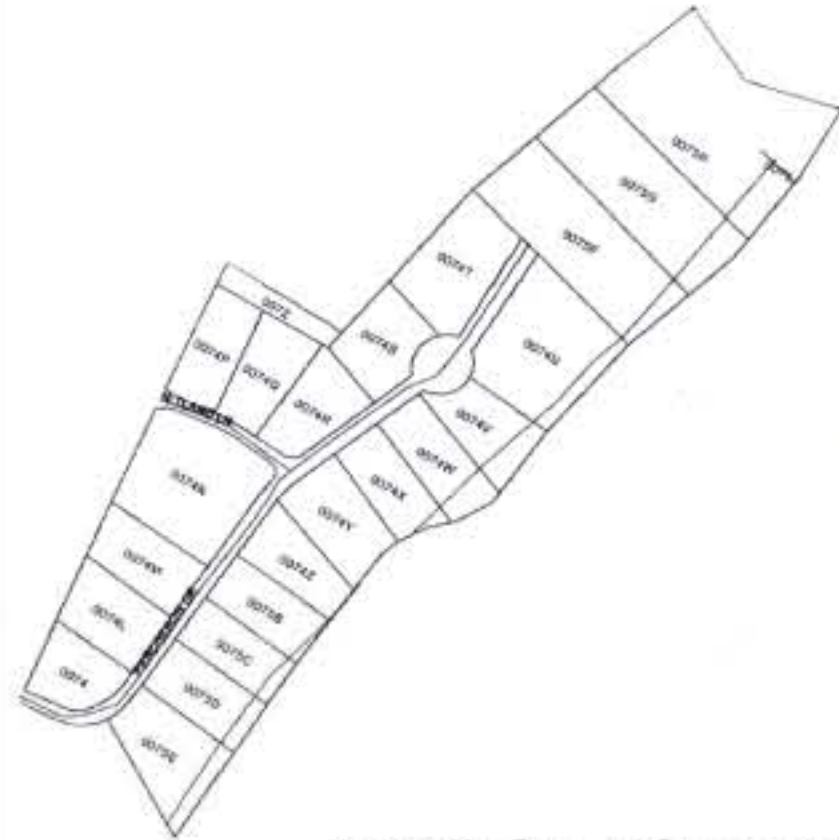
Originally Permitted 1984



## ROSEBROOK

PHASES I & II - 1 MILE

129 LOTS - ASSESSED VALUES \$204,000 TO \$361,000



## TAYLOR ESTATES

PHASE I - 1/4 MILE

24 LOTS - ASSESSED VALUES \$232,000 TO \$343,000



## TAYLOR ESTATES

PHASE II - 1/2 MILE

78 LOTS - ASSESSED VALUES \$210,000 TO \$307,000



## TAYLOR ESTATES

PHASE III - 1/2 MILE

11 LOTS - SALE PRICES \$400,000 +



Photograph taken June, 2006